



TAYMORY

# CUSTOM SWIM

2019 / 20

TAYMORY.COM



# **CUSTOM** SWIM

[INFO@TTAYARA.COM](mailto:INFO@TTAYARA.COM)

# INDEX

## ADULT

SW30	SLIP SWIMSUIT	7
SW41	TRUNK SWIMSUIT <b>NEW</b>	8
SW38	JAMMER <b>NEW</b>	9
SW32	WIDE STRAP SWIMSUIT	10
SW40	THIN STRAP SWIMSUIT	13
SW43	STAR BACK SWIMSUIT	14
SW47	T BACK SWIMSUIT <b>NEW</b>	15
SW44	SPORT BIKINI	16
SW45	CUTOUT BIKINI	17

## KIDS

SW34	SLIP	20
SW36	WIDE STRAP SWIMSUIT	20
SW33	THIN STRAP SWIMSUIT	21
SW48	T BACK SWIMSUIT <b>NEW</b>	21

## ACCESSORIES 24-27

P2	SILICONE CAP
TOA01	TOWEL
M7	CROSSOVER BACKPACK
M6	SEALED BACKPACK
P9	POLO
JN050	SWEATSHIRT
JN057	TRACKSUIT PANTS
CS01	SHORT
P10	SHORT SLEEVE T-SHIRT









***DURA<sup>+</sup> SKIN<sup>®</sup>***  
TIGHT FIT TECH

Maximum **softness fabric**, optimal support, anti-chafing, flat seams, fast drying and anti-peeling.

**100% resistant to chlorine and saltpeter**, with UV protection.

AAAAAAAAAAAAAAAA  
AAAAAAAAAAAAAAAA

**FLAT  
SEAMS**





## SLIP SWIMSUIT

**SW30**  
*custom*

**DURA+ SKIN**  
TIGHT FIT TECH



**SLIP**



**SWIM RESISTANCE**  
ANTICHLORINE & ANTISALTY



**SOFT TOUCH**  
EXCEPTIONAL  
COMFORT



**QUICK DRY**



**UPF 50+**  
SUN PROTECTION

- Short training swimsuit with adjustable drawstring and black inner lining **anti-transparency**.
- Made with **DURA + fabric**, of extreme softness and comfort.
- **100% resistant to chlorine** and saltwater, with UV protection.
- **Fast Dry system**, fast drying and anti-peeling properties.

**Weight:** 65 grams  
**Sizes:** XS - 3XL

**FAST DRY**



TRUNK



**SWIM RESISTANCE**  
ANTICHLORINE & ANTISALTY



**SECOND SKIN  
EFFECT**  
OPTIMUM FIT



**QUICK DRY**



**UPF 50+**  
SUN PROTECTION

- New swimsuit **boxer style** adapted to the latest trends in swimming, ideal for pool and beach.
- Made with **DURA + fabric**, of extreme softness and comfort.
- **100% resistant to chlorine** and saltpeter, with UV protection.
- Its composition accelerates the drying process after use, avoiding the generation of peeling.
- **Dark inner lining** and adjustable drawstring.

**Weight:** 70 grams

**Sizes:** XS - 3XL

**ANTI PEELING**



JAMMER

**SW38**  
*custom*

**NEW**

**DURA+ SKIN®**  
TIGHT FIT TECH



**JAMMER**



**SWIM RESISTANCE**  
ANTICHLORINE & ANTISALTY



**SECOND SKIN  
EFFECT**  
OPTIMUM FIT



**QUICK DRY**



**UPF 50+**  
SUN PROTECTION

- Long swimsuit, ideal for athletes who do not feel comfortable with slip or boxer models.
- Made with **DURA + fabric**, of extreme softness and comfort.
- **100% resistant to chlorine** and saltwater, with UV protection.
- Its FIT composition **optimizes the swim by not retaining water** and expelling it efficiently, accelerating the drying process after use. Fast dry system, fast drying.
- **Dark inner lining** and adjustable drawstring.

**Weight:** 70 grams

**Sizes:** XS - 3XL

**FREEDOM OF MOVEMENT**



**WIDE STRAPS  
SWIMSUIT**



**SWIM RESISTANCE**  
ANTICHLORINE & ANTISALTY



**SOFT TOUCH**  
EXCEPTIONAL  
COMFORT



**QUICK DRY**



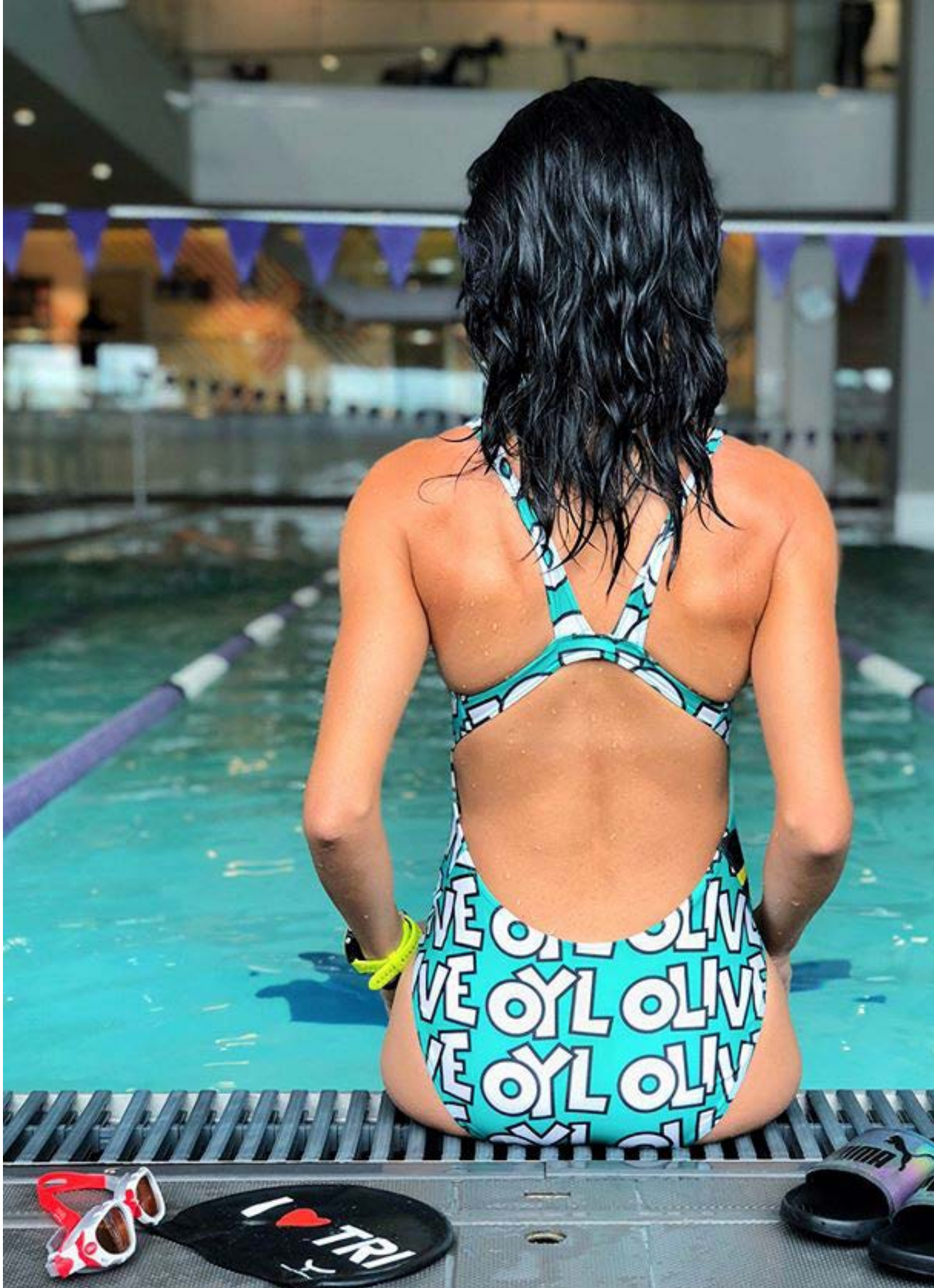
**UPF 50+**  
SUN PROTECTION

- **Wide strap** swimsuit with conventional and discreet cut. Ideal for training or aquatic activities.
- Developed with **DURA + fabric**, maximum softness. 100% resistant to chlorine and saltpeter, with UV protection.
- Back discovered with total freedom of movement. Highlights its front with perfect support to chest during swimming.
- It incorporates a black **anti-transparent and anti-chafing inner lining**. Quick drying with anti-peeling properties.

**Weight:** 105 grams

**Sizes:** XS - 3XL

**ANTITRANSPARENCIES**







## THIN STRAP SWIMSUIT

**SW40**  
*custom*

**DURA+ SKIN®**  
TIGHT FIT TECH



- Thin strap swimsuit, ideal for training and competition.
- Cut slightly further in than the other models, highlights its fully open back and a perfect frontal adjustment ensuring **optimal chest support** during the activity.
- Developed with **DURA + fabric**, maximum softness. **100% resistant to chlorine** and saltpeter, with UV protection.
- It incorporates a black **anti-transparent and anti-chafing inner lining**.
- Quick drying with **anti-peeling** properties.

**Weight:** 102 grams

**Sizes:** XS - 3XL

**OPTIMAL SUPPORT**





**STAR BACK**  
CROSSED STRAPS



**ADJUSTABLE STRAPS**  
ADJUST-FIT



**SWIM RESISTANCE**  
ANTICHLORINE & ANTISALTY



**SOFT TOUCH**  
EXCEPTIONAL COMFORT



**QUICK DRY**



**UPF 50+**  
SUN PROTECTION

- New star-shaped cross back swimsuit. It incorporates **adjustable straps** allow graduate the restraint.
- Its new cut **enhances the back** of the swimmer giving a sophisticated and differentiated touch.
- Made with **DURA + fabric**, of maximum resistance after intensive and prolonged use, without lose its softness and adaptation to the skin.
- Resistant to chlorine and saltpeper, with UV protection. It incorporates a black anti-transparent and anti-chafing inner lining. **Quick dry** with anti-peeling properties.

**Weight:** 102 grams

**Sizes:** XS - 3XL

## DIFFERENTIATED DESIGN



## T BACK SWIMSUIT

**SW47**  
*custom*

**NEW**

**DURA+ SKIN®**  
TIGHT FIT TECH



- New swimsuit with T-shaped back. It incorporates adjustable straps that allow to graduate the grip.
- New cut **enhances the back of the swimmer** giving a sophisticated and differentiated touch. Focusing on the support of the entire spine with the vertical elastic strip that covers it.
- Made with **DURA + fabric**, maximum strength after intensive and prolonged use, without losing its softness and adaptation to the skin.
- Resistant to chlorine and saltwater, with UV protection. It incorporates black anti-transparent and anti-chafing inner lining. **Quick dry** with anti-peeling properties.

**Weight:** 100 grams  
**Sizes:** XS - 3XL

**OPTIMAL GRIP**



BIKINI



**SWIM RESISTANCE**  
ANTICHLORINE & ANTISALTY



**SOFT TOUCH**  
EXCEPTIONAL  
COMFORT



**QUICK DRY**



**UPF 50+**  
SUN PROTECTION

- Bikini for swimming and open water training. Maintains the same peak neckline of the Cutout model but without frontal cut, nor lateral in the bottom.
- **DURA + fabric, resistant to chlorine and saltwater**, stands out for its maximum softness and adaptation to the skin.
- Resistant to chlorine and saltwater, with UV protection. It incorporates black anti-transparent and anti-chafing inner lining. **Quick dry** with anti-peeling properties.
- Optimal support of the chest thanks to its double cross back grip.

*\*Possibility to choose top and panty of different size.*

**Weight:** TOP 45 grams **BOTTOM** 50 grams

**Sizes:** XS - XL

**OPTIMAL GRIP**

## CUTOUT BIKINI

**SW45**  
*custom*

**DURA+ SKIN®**  
TIGHT FIT TECH



**FASHION CUT**  
FRONT CUT



**FASHION CUT**  
SIDE CUT



**SOFT TOUCH**  
EXCEPTIONAL  
COMFORT



**SWIM RESISTANCE**  
ANTICHLORINE & ANTISALTY



**QUICK DRY**

- New swimming and beach bikini with **bold and modern pattern**, both in the top and in the bottom.
- Small cut in the chest and on the side of the bottom leaving the skin exposed.
- **Soft-Speed fabric** for maximum softness and adaptation to the skin. **Resistant to chlorine and saltwater**, with UV protection. Black **anti-transparent** and anti-chafing **inner lining**. **Quick drying** with anti-peeling properties.
- Optimum support of the chest thanks to its double cross back grip.

*\*Possibility to choose top and pant of different size.*

**Weight:** TOP 40 grams **BOTTOM** 40 grams

**Sizes:** XS - XL

**FASHION CUT**







**KIDS**

- Short swimsuit slip style for daily training and competition.
- 100% chlorine resistant and UV protection. Made with fabric DURA +, extremely soft and comfortable.
- Quick drying with properties anti-peeling.
- Sizes: 4 - 14 years.



**SWIM RESISTANCE**  
ANTICHLORINE & ANTISALTY



**SOFT TOUCH**  
EXCEPTIONAL  
COMFORT



**QUICK DRY**



**UPF 50+**  
SUN PROTECTION

- Wide strap swimsuit for daily training and competition.
- Made with Soft-Speed fabric, of maximum smoothness. 100% resistant to chlorine and UV protection.
- Incorporates black anti-transparent and anti-chafing inner lining.
- Quick drying with properties anti-peeling.
- Sizes: 4 - 14 years.



**SWIM RESISTANCE**  
ANTICHLORINE & ANTISALTY



**SOFT TOUCH**  
EXCEPTIONAL  
COMFORT



**QUICK DRY**



**UPF 50+**  
SUN PROTECTION



## THIN STRAP SWIMSUIT

**SW33**  
custom



- Thin strap swimsuit for daily training and competition.
- Made with Soft-Speed fabric, of maximum smoothness. 100% resistant to chlorine and UV protection.
- Incorporates black anti-transparent and anti-chafing inner lining.
- Quick drying with properties anti-peeling.
- Sizes: 4 - 14 years.



**SWIM RESISTANCE**  
ANTICHLORINE & ANTISALTY



**SOFT TOUCH**  
EXCEPTIONAL  
COMFORT



**QUICK DRY**



**UPF 50+**  
SUN PROTECTION

## T BACK SWIMSUIT

**SW48**  
custom



- Thin strap T-shaped swimsuit for daily training and competition, reinforcing the entire spine. Exclusive design leaving free movement throughout the swimmer's back.
- Soft-Speed fabric of maximum softness. 100% chlorine resistant and UV protection.
- Quick drying with anti-peeling properties.
- Sizes: 6 - 14 years.



**SWIM RESISTANCE**  
ANTICHLORINE & ANTISALTY



**SOFT TOUCH**  
EXCEPTIONAL  
COMFORT



**QUICK DRY**



**UPF 50+**  
SUN PROTECTION



# ACCESSORIES





**P2**  
custom

## SILICONE CAP



- 100% hypoallergenic silicone cap. Optimal grip for training and competition.
- Non-slip interior, elastic composition and with recovery of its original shape after the swim.
- Resistant to chlorine, UV and salt.
- Base of 16 colors. Other colors under petition.

*\* Minimum order 50 units*



**100% SILICONE**



**ULTRACHLORINE**  
100% RESISTANT

**M7**  
custom

## CROSSOVER BACKPACK



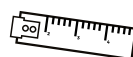
- Multisport backpack with 5 compartments and 30 liters of capacity.
- 2 side pockets, one of them with grid compartment to storage small and wet objects, guaranteeing ventilation and quick drying.
- The entire backpack is lined with a waterproof material that prevents the humidity of the garments of the interior transfer.

**TOA 01**  
*custom*

## MICROFIBER TOWEL



- Microfiber towel, ultracompact and highly absorbent.
- Highlights its lightness and quick drying.
- Measurement: 80x130 cm.



**80x130 CM.**



**100% MICROFIBRE**  
SOFTNESS & LIGHTNESS



**QUICK DRY**

**M6**  
*custom*

## SEALED BACKPACK



- Backpack with 5 compartments, 35 liters capacity.
- 2 side pockets, one of them with grid compartment to storage small and wet objects, guaranteeing ventilation and quick drying. Includes small front pocket with compartment inside.
- Padded back with double thick handle for optimal support.
- Fully lined with waterproof material that prevents the moisture of the garments, keeping it dry.

# COMPLETE YOUR EQUIPMENT

**P9**

SHORT SLEEVES POLO

---



**JN050**

ULTRALIGHT SWEATSHIRT

---



**CS01**

SHORT

---



**JN057**

TRACKSUIT PANTS

---



**P10**

SHORT SLEEVES T-SHIRT

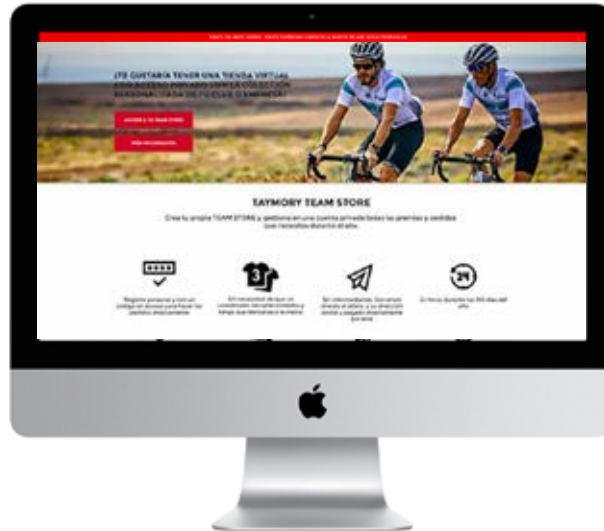
---





# ACTIVATE **YOUR TEAM STORE**

**ON-LINE SHOP** OF PRIVATE ACCESS WITH THE  
PERSONALIZED COLLECTION OF YOUR CLUB



Enable your TEAM STORE from **taymory.com**

Create your own TEAM STORE and manage all the garments in a private account and orders you need during the year for your club.



## **Personal access**

Access code to make your orders directly.



## **Without intermediaries**

no need that a coordinator collect units.



## **Direct delivery**

Shipping to your address and pay with your credit card.



## **Always online**

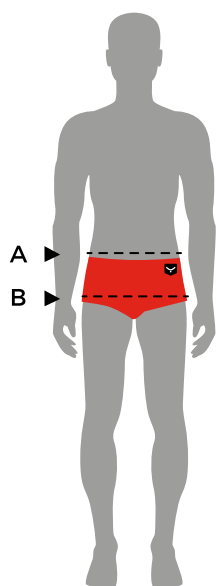
24/7 or according to periods of costumes renewal.

# SIZE GUIDE

\*MEASURES IN CENTIMETRES

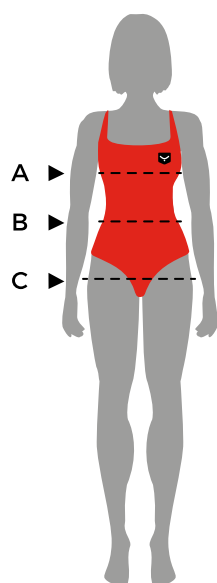
## ADULT

### SWIM MAN



SIZE	A WAIST	C HIP	WEIGHT
2XS	57 - 65	66 - 72	45 - 52
XS	65 - 73	72 - 80	52 - 62
S	73 - 81	80 - 88	62 - 65
M	81 - 89	88 - 96	66 - 75
L	89 - 97	96 - 104	76 - 85
XL	97 - 109	104 - 112	85 - 95
2XL	109 - 121	112 - 120	95
3XL	121 - 133	120 - 128	100

### SWIM WOMAN



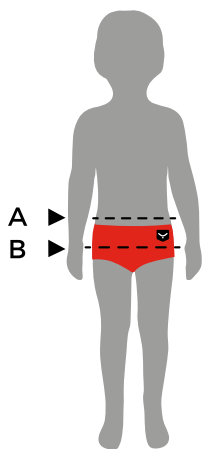
SIZE	A CHEST	B WAIST	C HIP	WEIGHT
2XS	69 - 76	53 - 60	77 - 84	40 - 45
XS	76 - 83	60 - 67	84 - 91	45 - 50
S	83 - 90	67 - 73	91 - 98	50 - 55
M	90 - 97	73 - 81	98 - 102	55 - 60
L	97 - 103	81 - 88	102 - 108	60 - 65
XL	103 - 108	88 - 98	108 - 114	65 - 75
2XL	109 - 114	95 - 105	112 - 120	70 - 80
3XL	115 - 120	102 - 112	118 - 126	75 - 85

# SIZE GUIDE

\*MEASURES IN CENTIMETRES

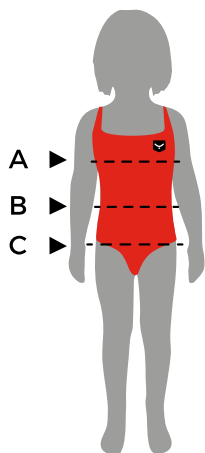
## KIDS

### SWIM BOY



AGE	A WAIST	B HIP
4	53 - 55	61
6	56 - 58	65
8	59 - 61	69
10	62 - 65	76
12	66 - 69	82
14	70 - 73	86

### SWIM GIRL



AGE	A CHEST	B WAIST	C HIP
4	56 - 59	52 - 53	61
6	60 - 63	54 - 55	66
8	64 - 67	56 - 57	71
10	68 - 72	58 - 59	76
12	73 - 77	60 - 62	81,5
14	78 - 82	63 - 65	86





[info@ttayara.com](mailto:info@ttayara.com)

+34 93 563 84 55

**TAYMORY.COM**

